

The Integration of Photovoltaics (PV) into Buildings



solarcentury

www.solarcentury.com



CPD Seminar

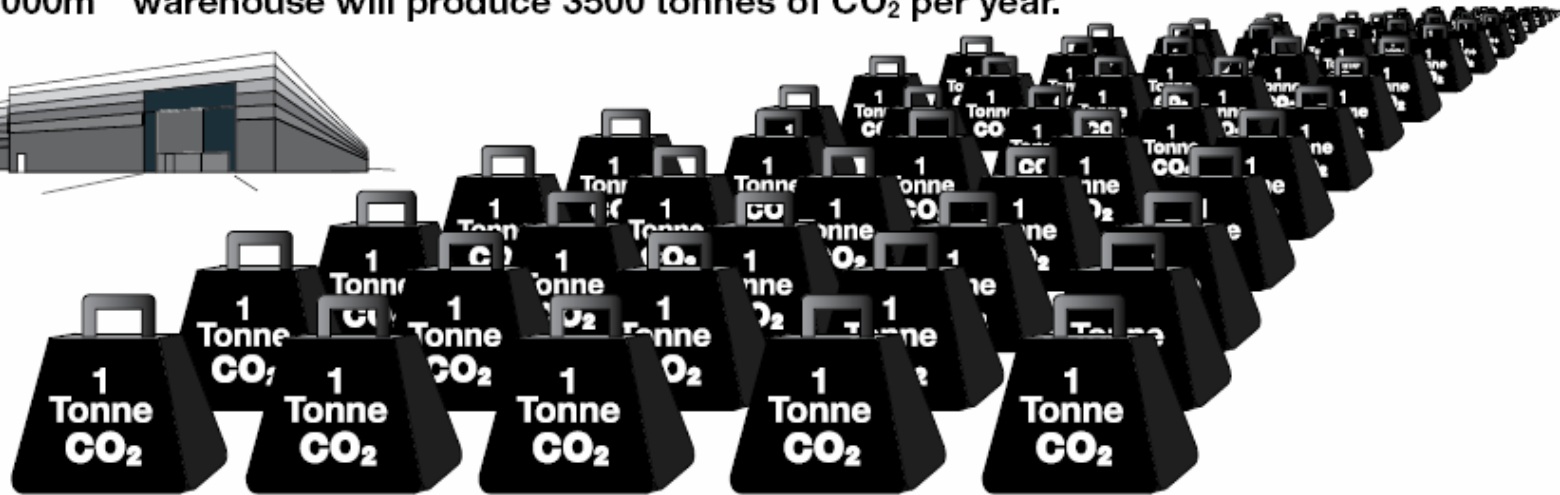


Carbon explained

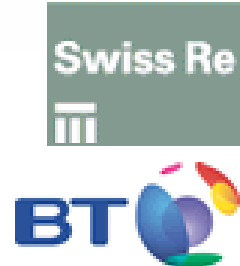
A typical 3 bedroom house in Britain will produce 5.5 tonnes of CO₂ per year as a result of its energy consumption.



A 40,000m² warehouse will produce 3500 tonnes of CO₂ per year.



Which is the equivalent of driving the Mondeo to the moon and back 22 times.



Definitions

kWp (kiloWatt peak) – maximum PV **power** output, used to describe system size.

1kWp system size will generate approximately **800kWh** of electricity **every year** in the United Kingdom.

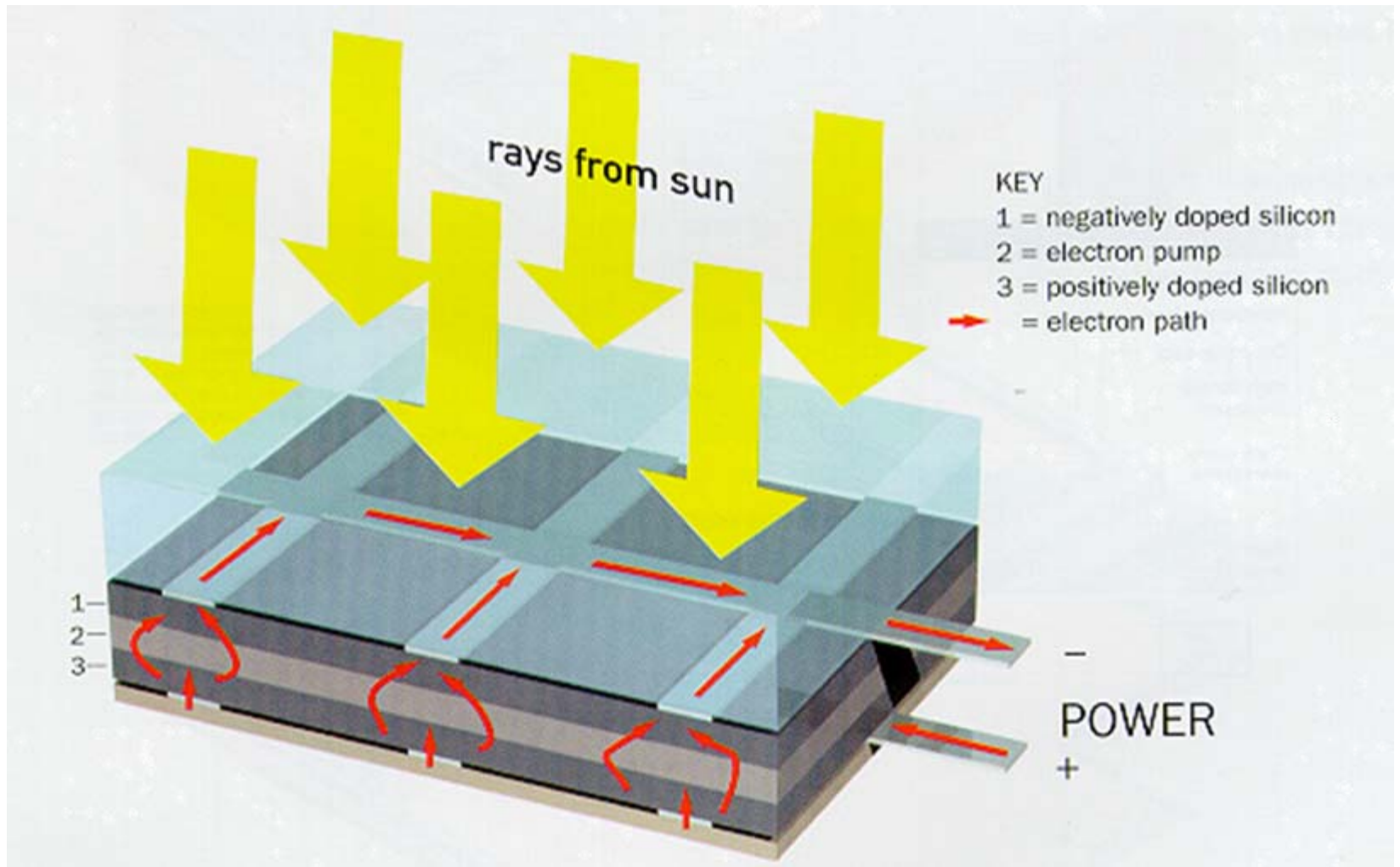
kWh (kiloWatt hours) - units of electrical **energy**, as used in utility billing.

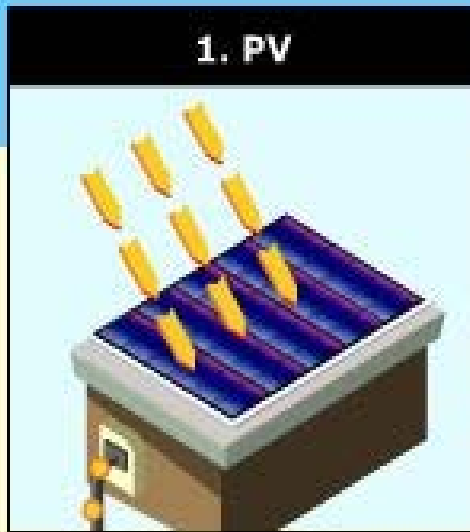
An average 3-bed homes uses approximately **3,300kWh** of electricity **every year** (source: Energy Saving Trust).

An average **energy efficient** home uses approximately **1,960kWh every year**. (source: AECB, sustainable building association silver standard)

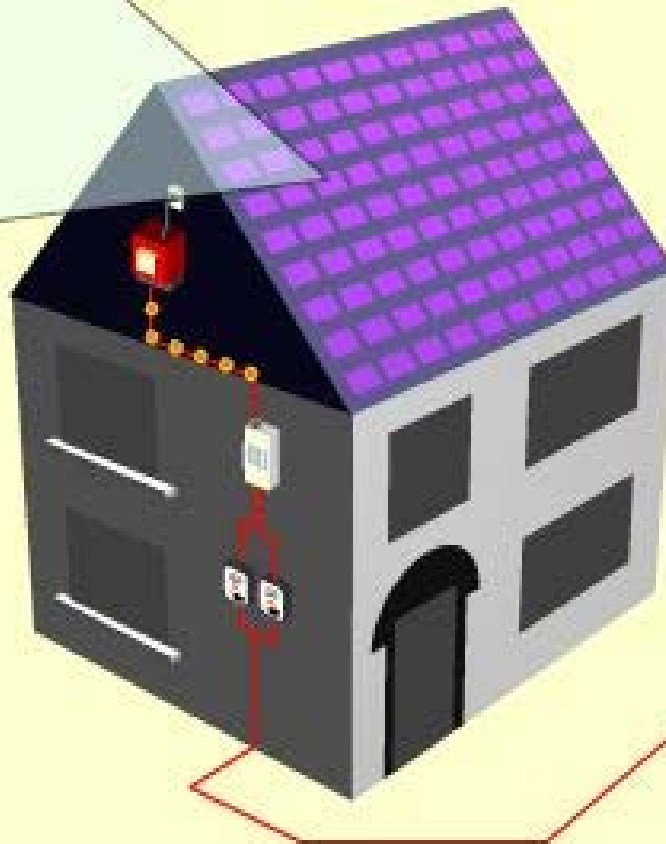


Photovoltaics (PV)

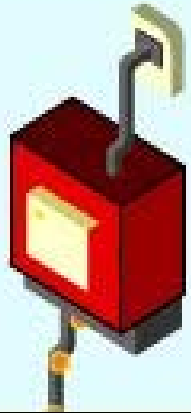




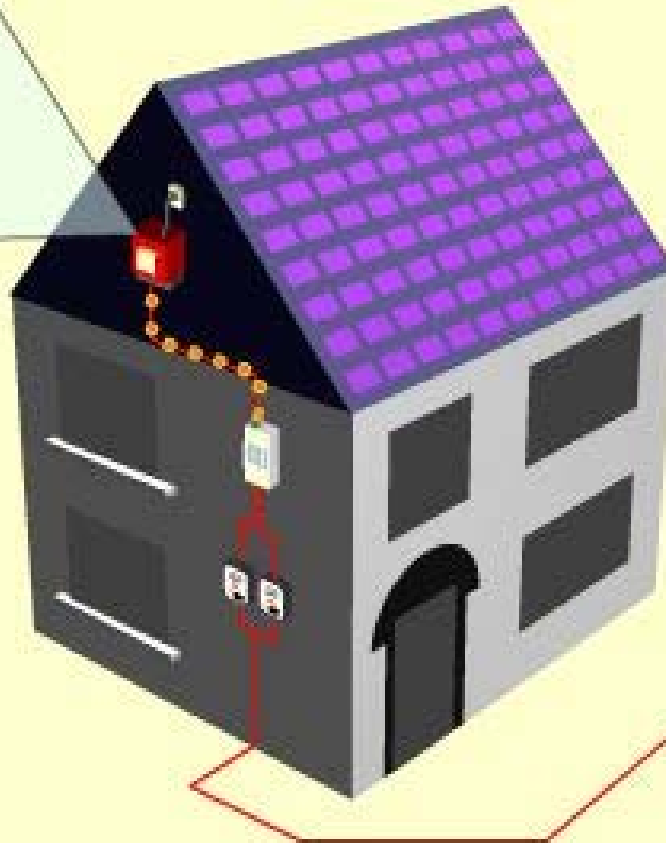
Daylight hits the PV and is converted to clean electricity. There are no moving parts so this happens silently.



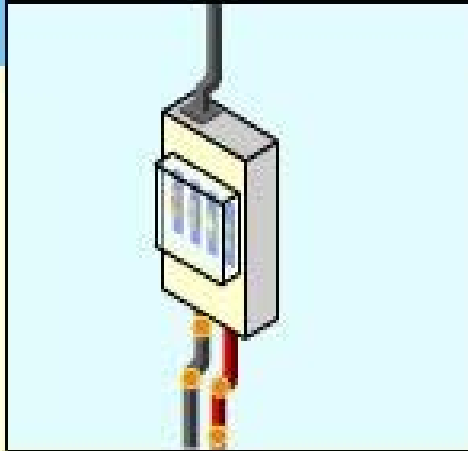
2. INVERTER



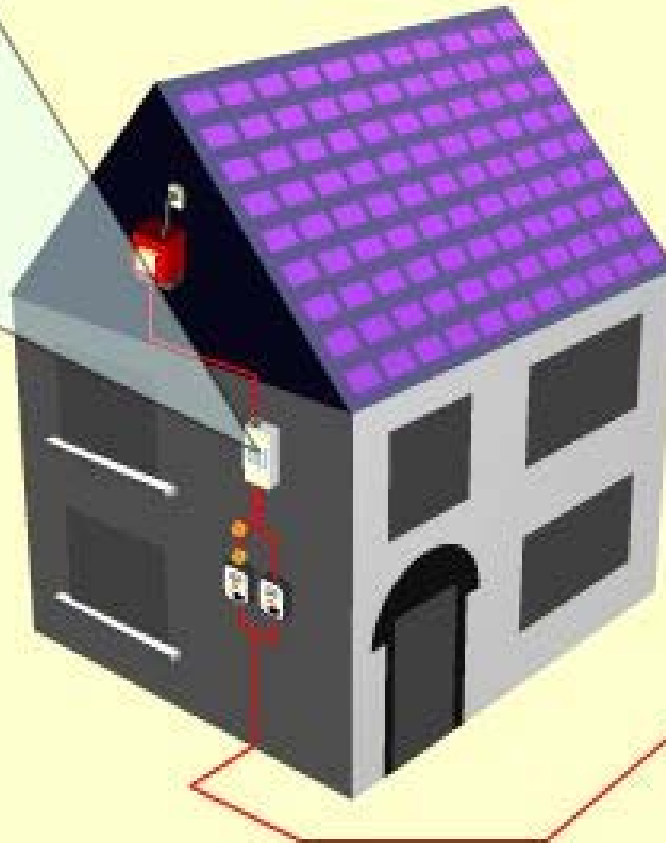
The electricity is d.c. (direct current). An inverter makes it a.c. (alternating current, in sync with mains electricity) so that it can be used normally.



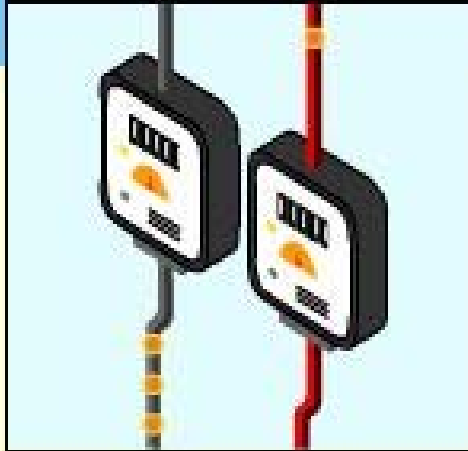
3. FUSE BOX



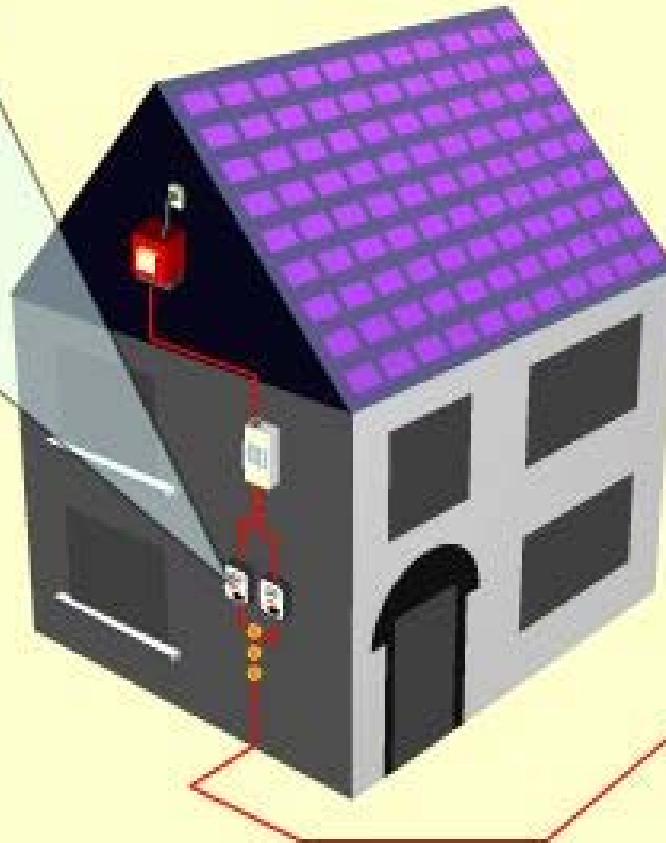
The solar system is connected to the mains via your fuse box, for safety.



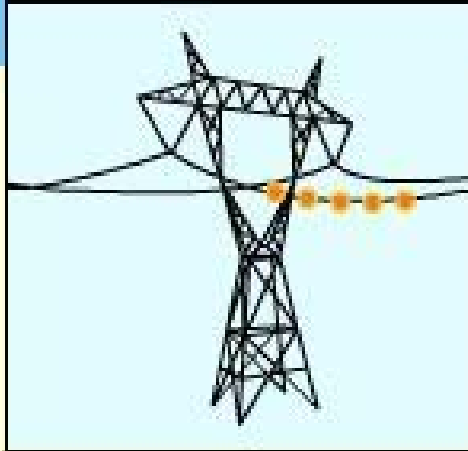
4. METERS



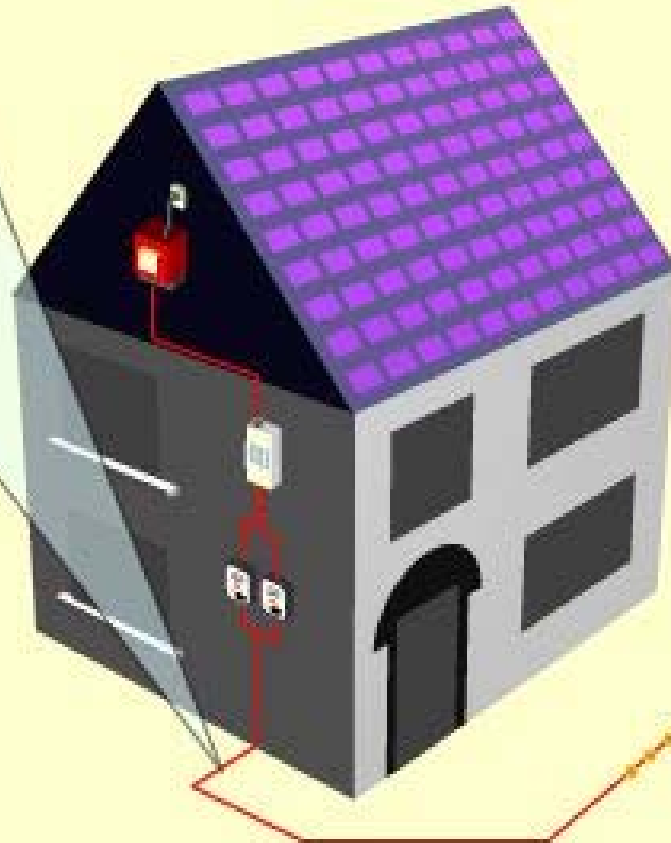
The PV roof generates electricity all day. Spare electricity automatically flows out to the grid. As an option we can fit an extra electricity meter that measures how much you export.



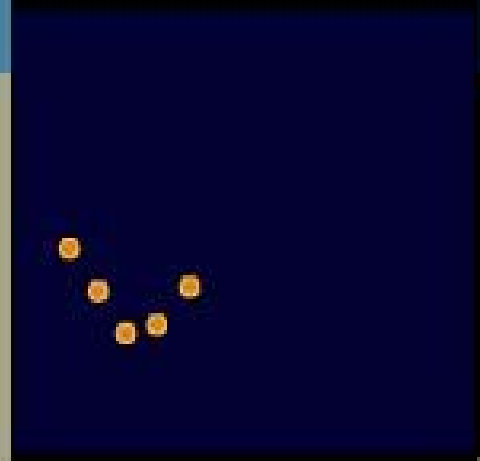
5. ELECTRICITY SOLD



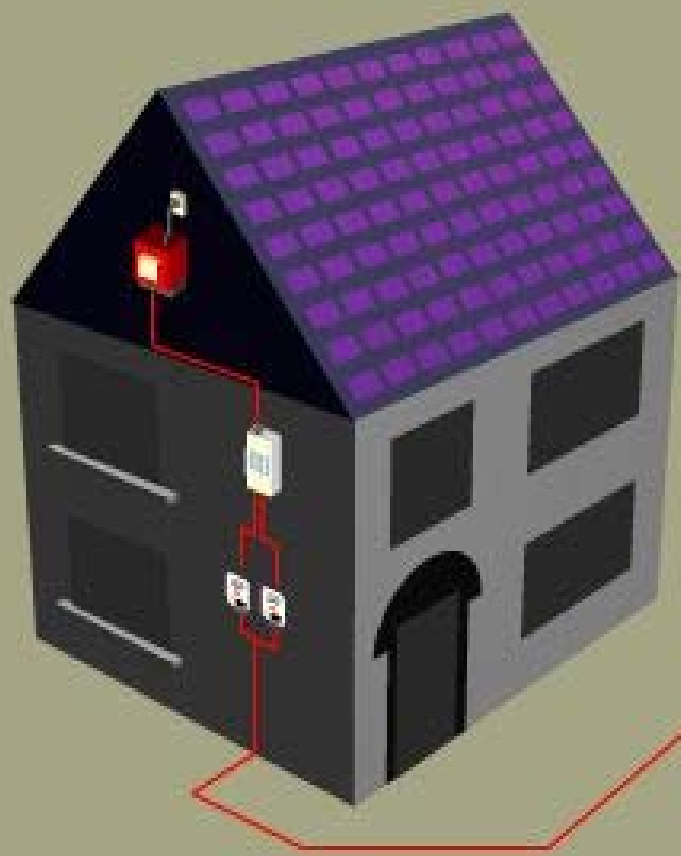
Your spare clean electricity is sold back to your electricity supplier.



6. NIGHT-TIME



At night, the PV does not produce any electricity. Instead, your mains power is automatically supplied by the grid. Extra power is always available from the grid at times of high demand.



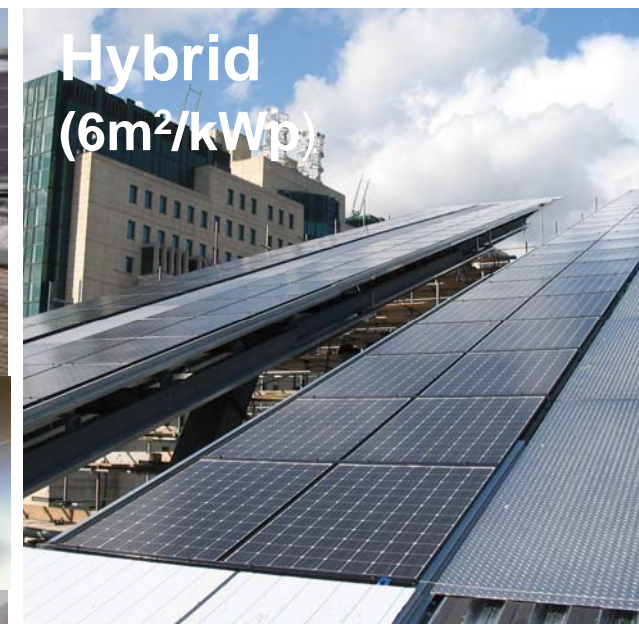
Technologies

Small surface areas

Good yield

Cloudy conditions

V.large surface areas



Large surface areas

Good yield

Small surface areas

V.good yield

Which PV technology?

Three factors need to be considered:

1. Energy requirement
- then... 2. Area
- finally... 3. Budget

Cost implications:

Cost is project specific.

As a rule of thumb:

1kWp system is approximately £7,500*

and a 200kWp is approximately

£4,000/kWp* fully installed.



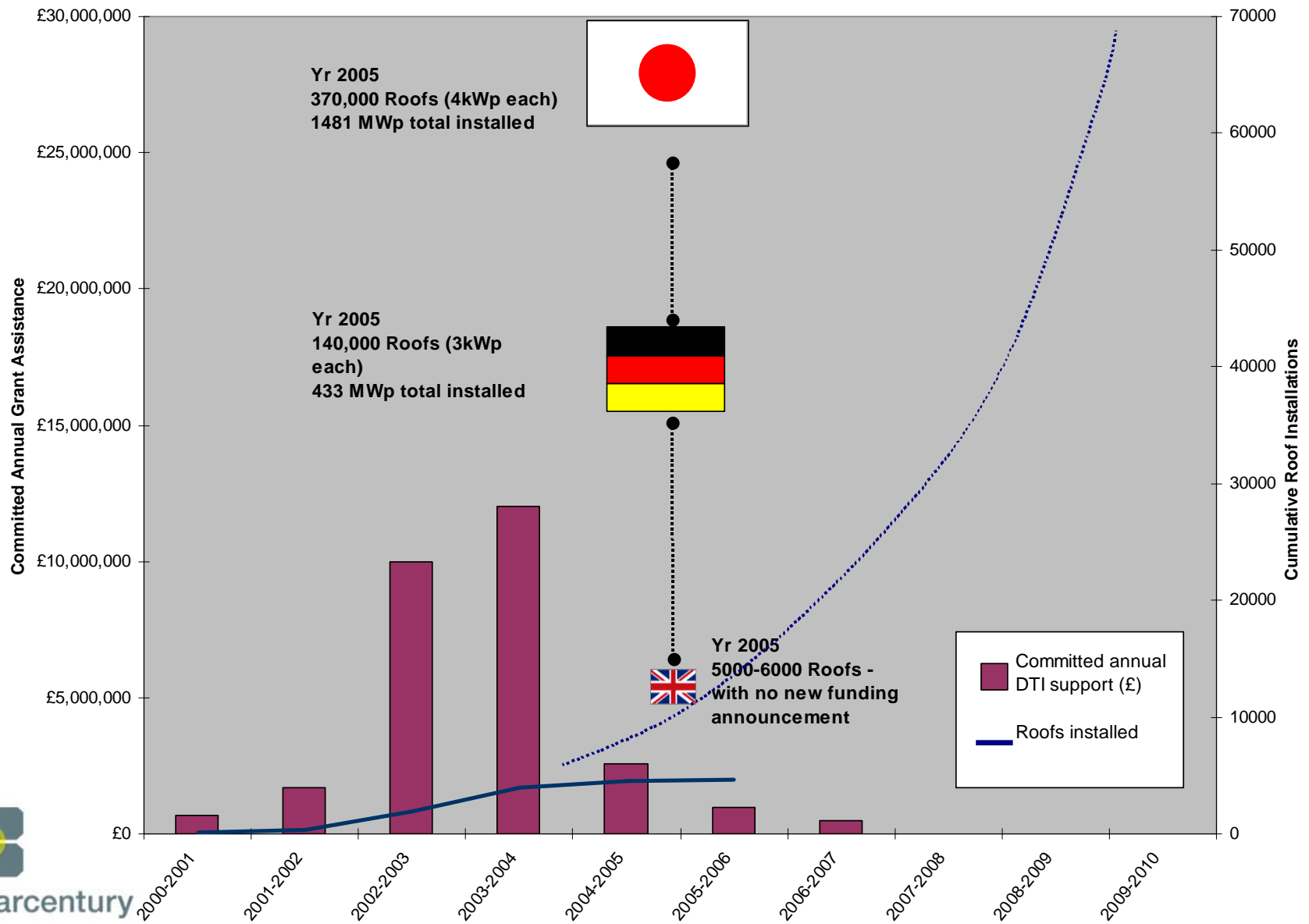
solarcentury

* Using solar as a building product can offset this cost further

Policy Drivers



Total installed PV in Europe and UK



Policy Drivers: Carrots

2001: The Climate Change Levy (CCL):
Tax on energy - industry, commercial/public sector
Solar energy is exempt

2001-2003 : Department for Trade and Industry (DTI)
Domestic Field Trial **£5.4M**

2003-2006: UK **Major Demonstration Programme £25M**
(up to March 2006)

Current government programme

2006-8 : **Low Carbon Building Programme**

Phase 1: £78.5M - 8 renewables over 7 funding rounds.

Stream 1 <5kWp PV: £15,000 or 50%; SHW: £400 or 30%

Stream 2 >5kWp Commercial: £100k or 40-50%;
Public sector: £30k or 50%

Phase 2: £50M – 5 renewables, rolling applications from framework suppliers only.

Public Sector Organisations

Package: 4.2kWp generating 3,300kWh/yr
<£5,000/kWp

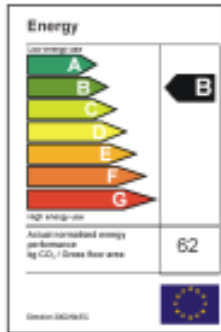
Package Price: £20,000

Cost to Applicant: £10,000

Policy drivers: Sticks

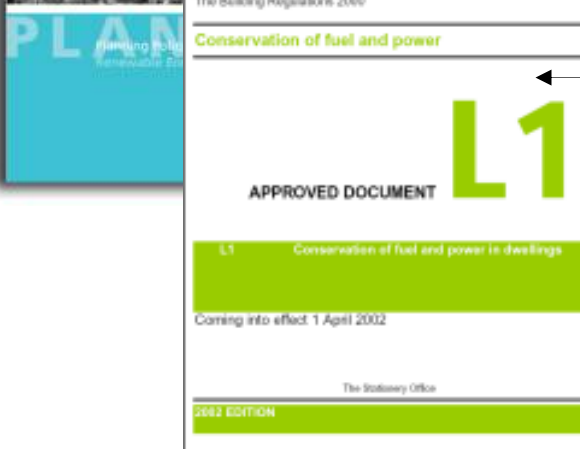
Energy Certificate

According to the directive 2002/91/EC of the European Parliament and of the Council of the European Union, the energy performance of this building is evaluated. The energy performance is determined and this building is found very energy efficient.



Certification organisation
Street
PG loc
City
Tel

Building name
Organisation
Street
City



European level

EPBD (European Performance in Building Directives)

National level

PPS22: Planning requirements
Part L Building Regulations: Energy

Local level

The Merton Rule

Part 2 L - Building Regulations

- Energy performance of new buildings will need improve by between **23-28% against 2002** building performance figures
- Of which **15-20%** improvement in **energy efficiency** depending on ventilation type
- Plus a benchmark provision of **energy efficiency or on-site renewable energy** systems to save a **further 10%** of carbon emissions



Local Planning Policy drivers

Merton Borough Council UDP policy PE13:

Adopted Oct 2003

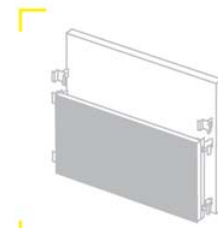
“All developments (either new build or conversion) with a floor-space of 1000m² or ten or more residential units to displace at least 10% of carbon dioxide emissions through on-site renewable energy, above and beyond Building Regulations requirement”

Department for **Communities and Local Communities, DCLG**

The Minister for Housing and Planning Yvette Cooper's statement on 8th June announced that:

“The Government **expect** all planning authorities to include policies in their development plans that require a percentage of the energy in new developments to come from on-site renewables.”

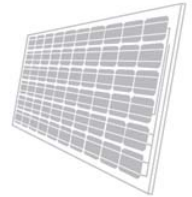
Solar Energy in the Built Environment



Solar Cladding



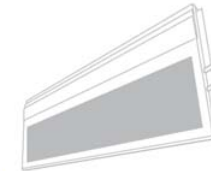
C21e tile



Electric Sunstation



Sunslates



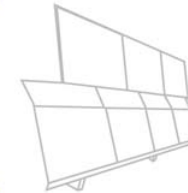
C21t tile



Solar Louvres



Thermal Sunstation



Solar Barrier



Energy Roof

Application: sunstation®

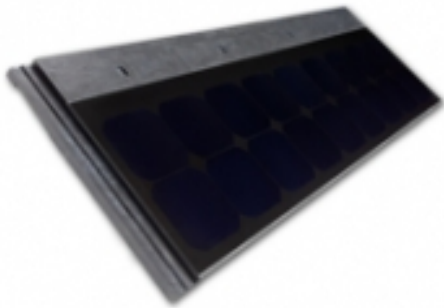
Retrofitted modules on surface of domestic roofs



solarcentury

Application: The CompleteSolarRoof

Replaces conventional roofing tiles with monocrystalline C21 PV tiles



Application: SunSlates

Replaces conventional roofing tiles with polycrystalline PV SunSlates



Perthshire HA, 2003



solarcentury

Application: Energy Roof

Modules on large flat roofs



solarcentury

solarcentury



Foster + Partners



Bishops Square, Spitalfields 2005

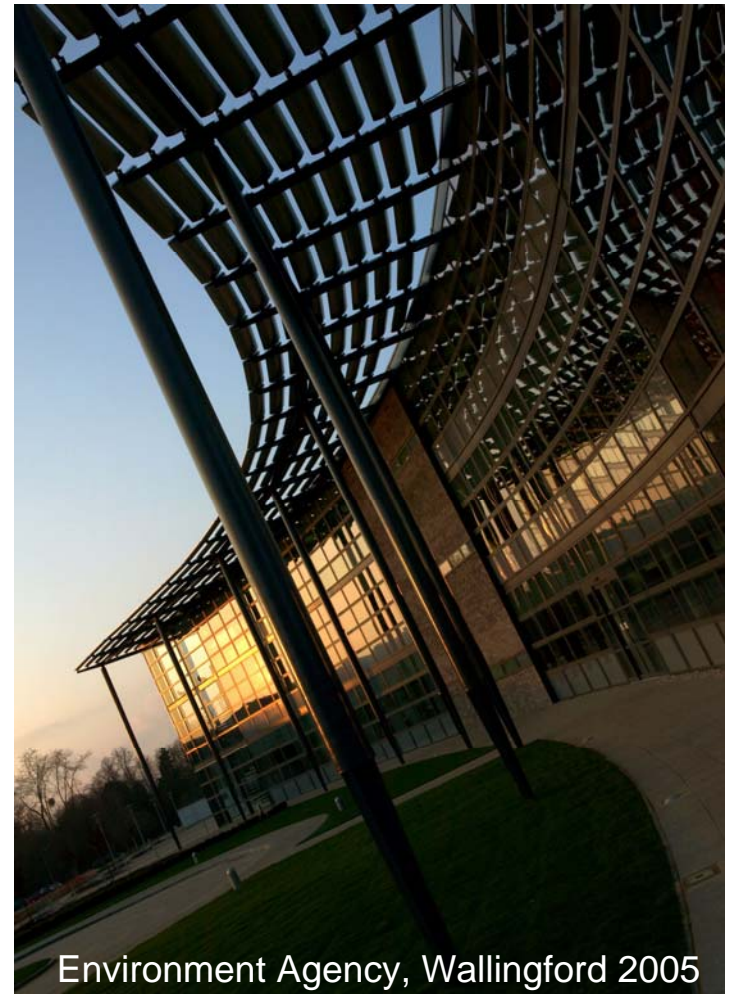
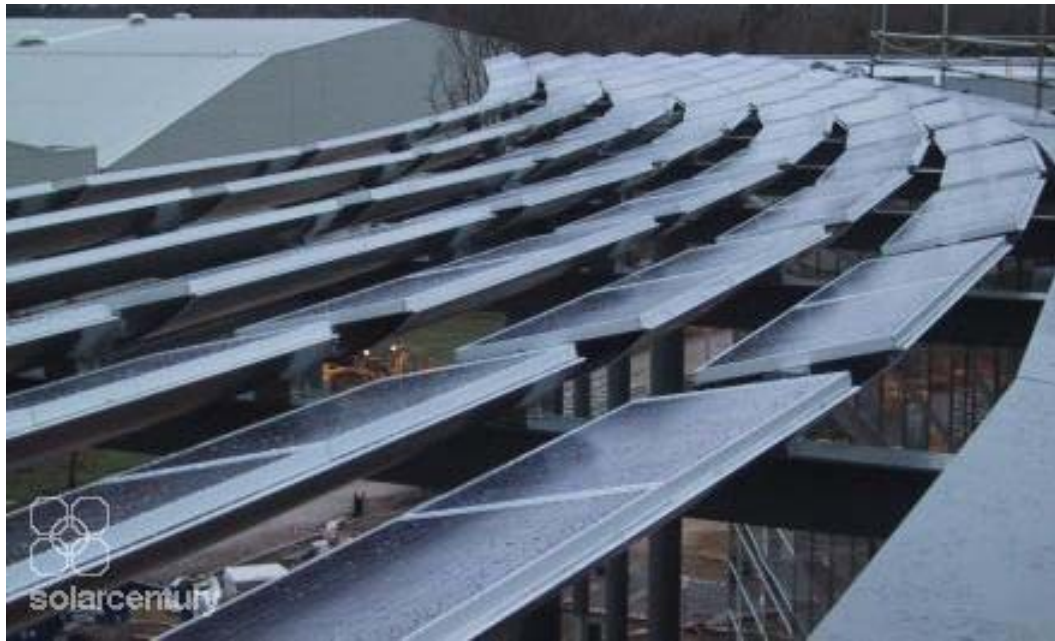
Application: Solar Cladding

Replaces conventional rainscreen cladding with PV modules



Application: Solar Louvres

Replaces conventional louvres with PV modules as louvres



Application: Solar Glazing (bespoke)



Replaces conventional glazing/atria with PV cells



solarcentury



Eden Project, Cornwall, 2005

Design Considerations



Design issues: Orientation and tilt

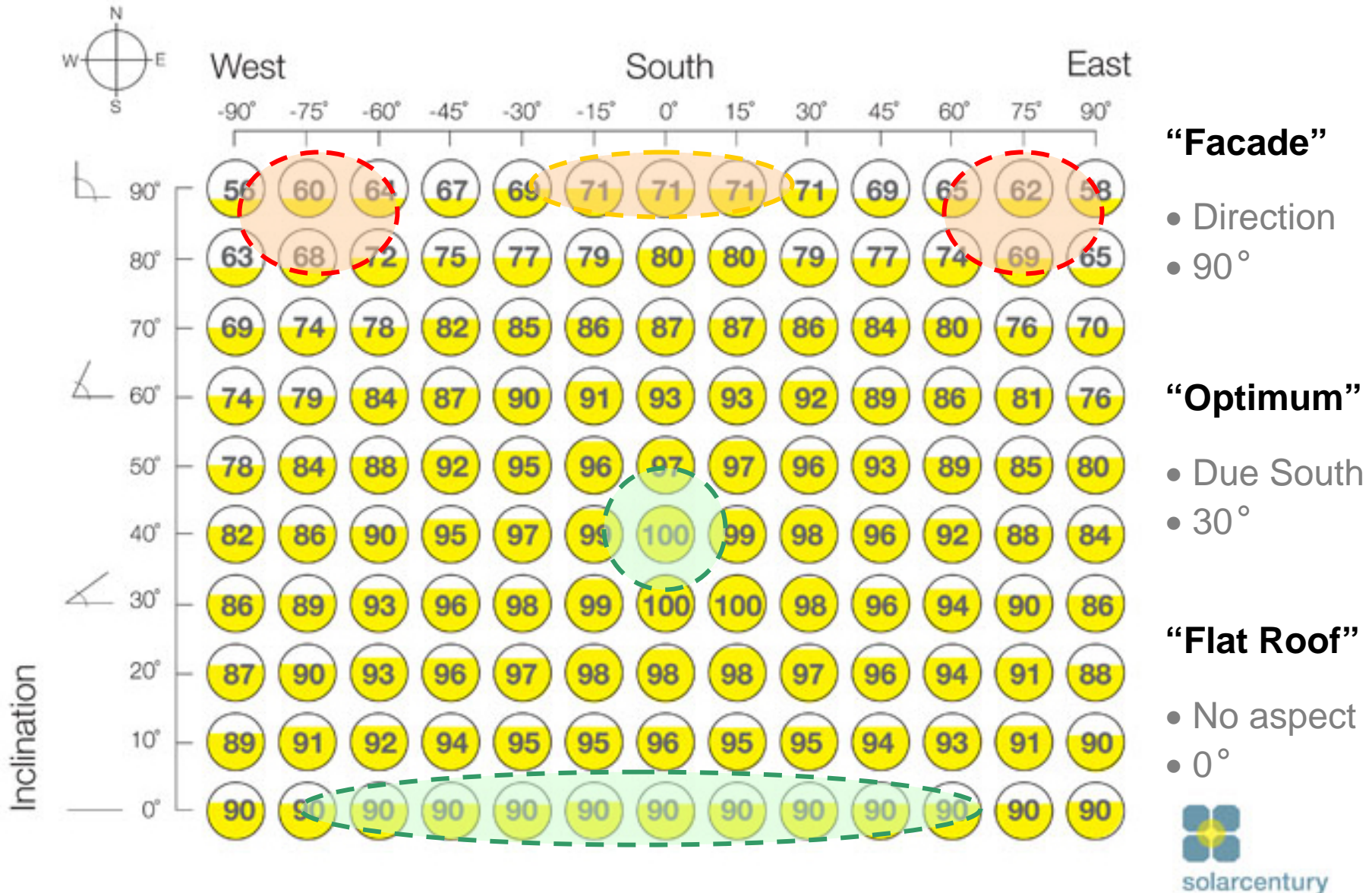


Fig. 5: PV efficiency with varying orientation and tilt.

Solar life expectancy



September 2006, p.74

“The oldest solar module in operation have now been generating for 30years and no end in sight.”



Science and industry are almost surprised by the yield from old solar modules that simply don't just cease operation. In the past, costs were calculated based on 20 years of service – and now it has to be conceded that this was a rough estimate. There seems to be a complete lack of knowledge about the life expectancy for solar modules. What is the limit to a module's lifespan?

Solar modules have a very long guarantee period in comparison to other products – 20 years on 80 percent of the nominal or minimum power rating is somewhat of a lower limit. That eases the minds of customers – but these are skeptics. Last year's outline for the «Reliability of PV modules» project supported by the German Federal Ministry of the Environment stated: «It should be taken into consideration that these long guarantee periods are not scientifically founded, but rather emanate from the marketing departments of the companies. There is no certain insight available with regard to the long-term reliability of module technology based on operating experience with PV systems so far.»

Theoretically, a thoroughly encapsulated solar cell should deliver electricity indefinitely. But as is so often the case, practice defies theory: modules deliver less electricity over the years or fail completely. Of course, manufacturers and customers would like to know more precisely when this will happen and what the performance curve will look like at this point. The truth is, nobody knows how long a solar module will last. Experts can't even agree on what constitutes the end of a module's product life – Is it when the performance falls short of 80 percent of the nominal power? Less than 70 percent? Or 50? Or perhaps when it has no power at all? There are many ways to define the term «end» in this light, and



Doing the Sums



Displacing 10% of CO2

EXTRA BUILD COST



Industrial



Domestic (approx 5 dwellings)



Commercial



Domestic (VHB)

Re-coup capital costs

Solar adds value to your property



“The provision of C21e, an integrated solar photovoltaic tile, generated significant interest and helped the homes sell faster and at a significant premium”

Tom Whatling, Divisional Environmental Manager of Gleeson Homes

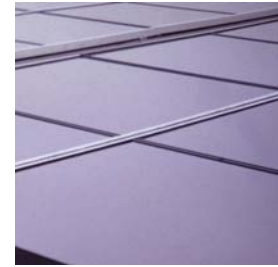
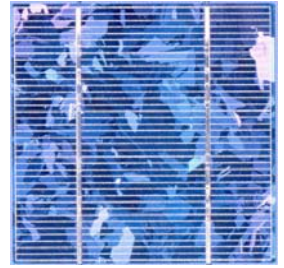
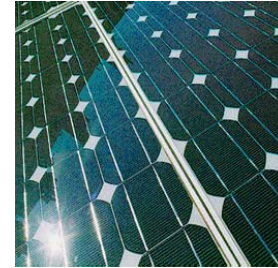


Townhouse with C21e solar tiles sold at a **premium of 8.6%**

PV summary

PV – Photovoltaics

- Tried and tested technology
- Highly reliable – “fit and forget”
- Ideal for urban environment
- Can be used as a building materials for life
- Couple with energy efficiency
- Maximum carbon offset per unit of electricity generated
- Additional revenue from electricity generated



solarcentury

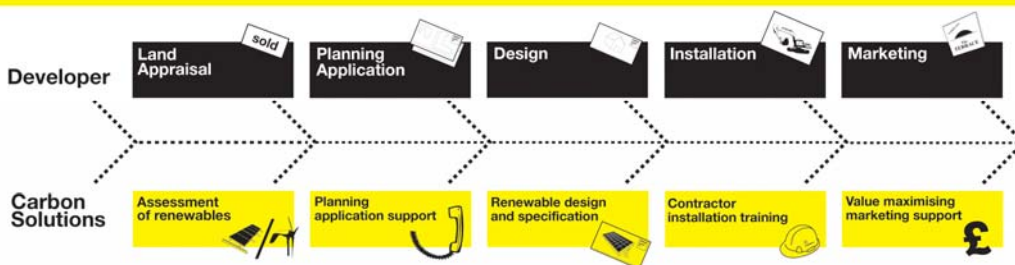
- Leading **solar innovations** company, specialising on photovoltaics
- 500 projects to date
Saving 1,500 tonnes CO₂ every year
- Designed & installed **1st Merton Rule project** (2004) www.themertonrule.org
- Renewables planning consultancy for The Merton Rule



solarcentury

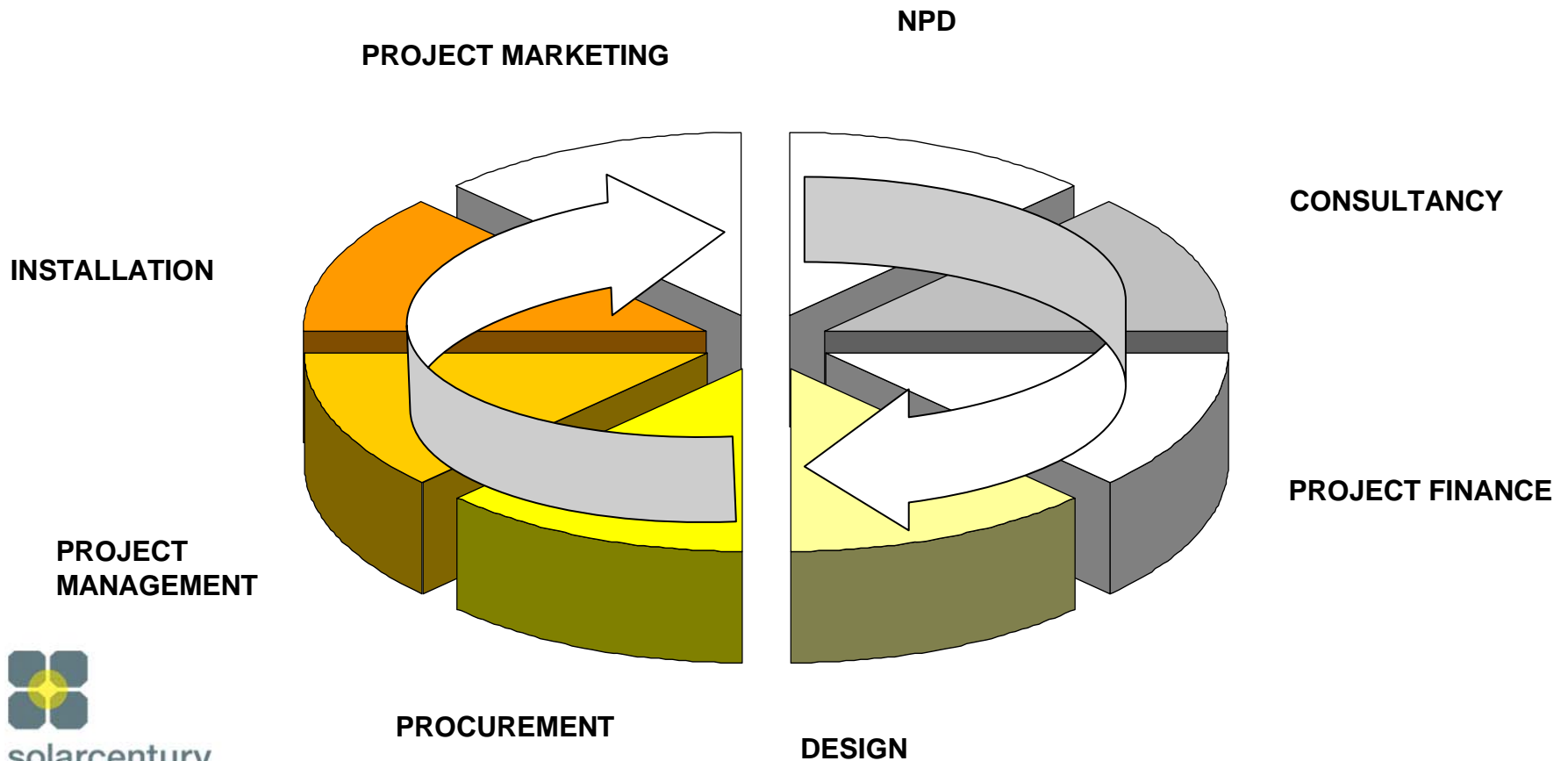


The Renewables Planning Service



Our services

We work with architects, developers and engineers to deliver renewable energy carbon solutions and low carbon building products.



Government support

“We could achieve a virtually zero carbon energy system in the long term ...this is technologically and economically feasible ...”

**Tony Blair, Prime Minister,
visiting solarcentury on 14/09/04**



solarcentury

Government support

“I’d like to see every South-facing roof in London covered with solar photovoltaics and solar thermal panels.”

**Ken Livingstone, Mayor of London,
visiting solarcentury on 27/07/06**



solarcentury

Useful links and further reading

www.solarcentury.com

www.communities.gov.uk

www.themertonrule.org

www.est.org.uk/solar



Why wait?

